

SKOI-DW-9W-920



Light Output Ratio:	100.0%	
Luminaire Power:	1.156 W	
SHR Nominal:	0.50	Calculated using the TM5
SHR Maximum:	0.55	fine grid method.

C Range: 0 - 360DEG
C Interval: 5.0DEG
Test Speed: MEDIUM
Temperature: 25.3DEG
Operators: Jason
Test Date: 2022-03-17

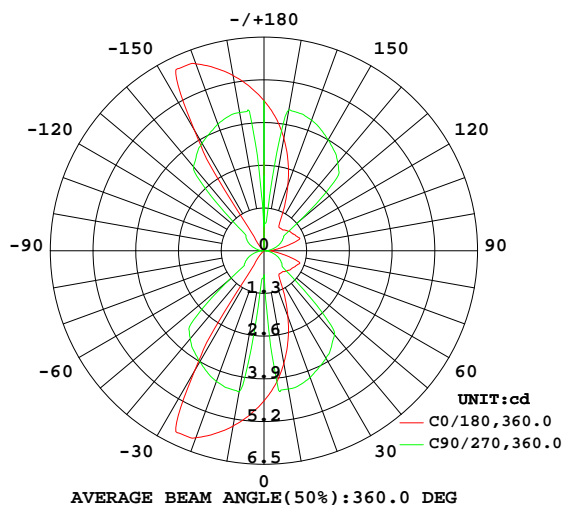
γ Range: 0 - 180DEG
γ Interval: 0.5DEG
Test System: EVERFINE GO-2000_V1 SYSTEM V2.0.362
Humidity: 65.0%
Test Distance: 8.967m [K=1.1152]
Remarks:

LUMINAIRE PHOTOMETRIC TEST REPORT

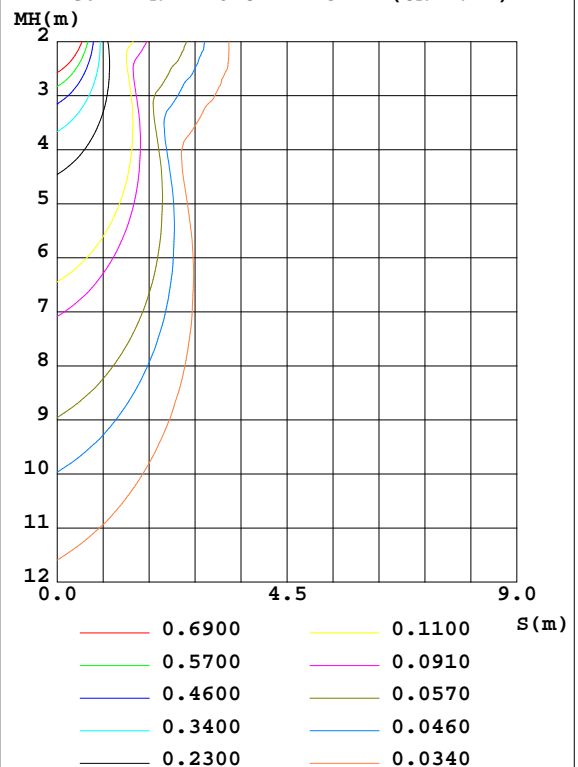
Test:U:221.0V I:0.0148A P:1.156W PF:0.3543 Freq:49.99Hz Lamp Flux:14.6589x1 lm		
NAME: SKOI-DW-9W-920	TYPE:Downlight	WEIGHT:
SPEC.:2000K	DIM.:	SERIAL No.:
MFR.: NEKO LIGHTING AG	SUR.:L100*W100	Shielding Angle:

DATA OF LAMP		PHOTOMETRIC DATA Eff: 12.68 lm/W			
MODEL	Zigen-2000K	Imax(cd)	6.201	S/MH(C0/180)	0.93
NOMINAL POWER(W)	1	LOR(%)	100.0	S/MH(C90/270)	1.82
RATED VOLTAGE(V)	220.0	TOTAL FLUX(lm)	14.659	η UP,DN(C0-180)	26.2,23.8
NOMINAL FLUX(lm)	14.6589	CIE CLASS	DIFFUSE	η UP,DN(C180-360)	23.8,26.2
LAMPS INSIDE	1	η up(%)	50.0	CIBSE SHR NOM	0.50
TEST VOLTAGE(V)	220.0	η down(%)	50.0	CIBSE SHR MAX	0.55

LUMINOUS INTENSITY DISTRIBUTION DIAGRAM



C0 PLANE ISOLUX DIAGRAM (UNIT:lx)



C Range: 0 - 360DEG
C Interval: 5.0DEG
Test Speed: MEDIUM
Temperature:25.3DEG
Operators:Jason
Test Date:2022-03-17

γ Range: 0 - 180DEG
 γ Interval: 0.5DEG
Test System:EVERFINE GO-2000_V1 SYSTEM V2.0.362
Humidity:65.0%
Test Distance:8.967m [K=1.1152]
Remarks:

ZONAL FLUX DIAGRAM

ZONAL FLUX DIAGRAM:

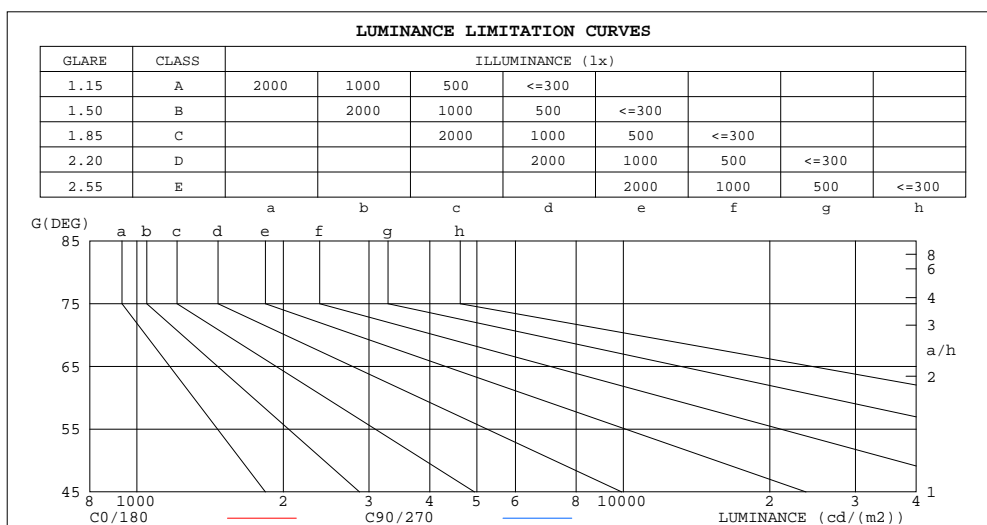
γ	C0	C45	C90	C135	C180	C225	C270	C315	γ	Φ zone	Φ total	Φ lum, lamp
10	3.482	3.768	4.274	5.054	5.415	5.127	4.354	3.832	0- 10	0.3938	0.3938	2.69,2.69
20	2.134	2.837	4.103	2.040	6.053	5.540	4.238	2.881	10- 20	1.148	1.542	10.5,10.5
30	0.9363	1.823	3.779	5.651	4.244	5.760	3.904	1.757	20- 30	1.783	3.325	22.7,22.7
40	0.8548	1.029	3.340	1.201	0.3129	3.470	3.491	0.9303	30- 40	1.623	4.948	33.8,33.8
50	0.9355	0.8793	0.7165	0.1983	0.0052	0.3191	1.408	0.9204	40- 50	0.8102	5.758	39.3,39.3
60	1.024	0.8540	0.5752	0	0.0052	0.0471	0.6479	0.9151	50- 60	0.5257	6.284	42.9,42.9
70	1.150	0.8100	0.3817	0	0.0052	0.0052	0.4440	0.9099	60- 70	0.4795	6.763	46.1,46.1
80	0.5285	0.4698	0.1675	0	0	0	0.2193	0.6851	70- 80	0.3900	7.153	48.8,48.8
90	0.1568	0.2500	0.0261	0	0	0.0052	0.0314	0.1829	80- 90	0.1760	7.329	50,50
100	0.5285	0.6851	0.2193	0	0	0	0.1675	0.4698	90-100	0.1759	7.505	51.2,51.2
110	1.150	0.9099	0.4440	0.0052	0.0052	0	0.3817	0.8100	100-110	0.3900	7.895	53.9,53.9
120	1.024	0.9151	0.6479	0.0471	0.0052	0	0.5752	0.8540	110-120	0.4795	8.375	57.1,57.1
130	0.9355	0.9204	1.408	0.3191	0.0052	0.1983	0.7165	0.8793	120-130	0.5257	8.901	60.7,60.7
140	0.8548	0.9303	3.491	3.470	0.3129	1.201	3.340	1.029	130-140	0.8102	9.711	66.2,66.2
150	0.9363	1.757	3.904	5.760	4.244	5.651	3.779	1.823	140-150	1.623	11.33	77.3,77.3
160	2.134	2.881	4.238	5.540	6.053	2.040	4.103	2.837	150-160	1.783	13.12	89.5,89.5
170	3.482	3.832	4.354	5.127	5.415	5.054	4.274	3.768	160-170	1.148	14.27	97.3,97.3
180	4.569	4.569	4.569	4.569	4.569	4.569	4.569	4.569	170-180	0.3938	14.66	100,100
DEG	LUMINOUS INTENSITY:cd									UNIT:lm		

C Range: 0 - 360DEG
C Interval: 5.0DEG
Test Speed: MEDIUM
Temperature:25.3DEG
Operators:Jason
Test Date:2022-03-17

γ Range: 0 - 180DEG
 γ Interval: 0.5DEG
Test System:EVERFINE GO-2000_V1 SYSTEM V2.0.362
Humidity:65.0%
Test Distance:8.967m [K=1.1152]
Remarks:

LUMINANCE LIMITATION CURVES

Test:U:221.0V I:0.0148A P:1.156W PF:0.3543 Freq:49.99Hz Lamp Flux:14.6589x1 lm		
NAME: SKOI-DW-9W-920	TYPE:Downlight	WEIGHT:
SPEC.:2000K	DIM.:	SERIAL No.:
MFR.: NEKO LIGHTING AG	SUR.:L100*W100	Shielding Angle:



LUMINANCE cd/(m2)		
G(DEG)	C0/180	C90/270
85	342	90
80	304	96
75	348	105
70	336	112
65	255	116
60	205	115
55	173	116
50	146	111
45	127	267

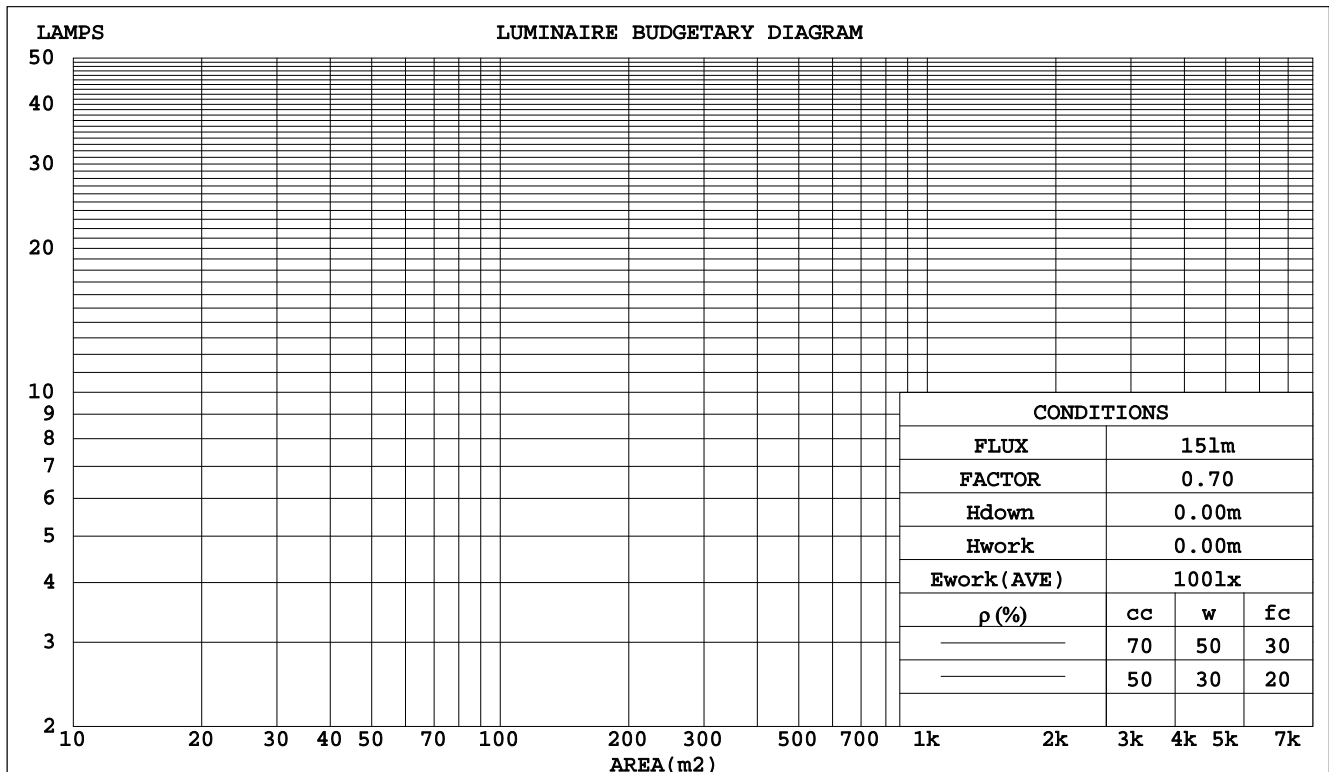
C Range: 0 - 360DEG
C Interval: 5.0DEG
Test Speed: MEDIUM
Temperature:25.3DEG
Operators:Jason
Test Date:2022-03-17

γ Range: 0 - 180DEG
 γ Interval: 0.5DEG
Test System:EVERFINE GO-2000_V1 SYSTEM V2.0.362
Humidity:65.0%
Test Distance:8.967m [K=1.1152]
Remarks:

CU AND LUMINAIRE BUDGETARY ESTIMATE DIAGRAM

Test:U:221.0V I:0.0148A P:1.156W PF:0.3543 Freq:49.99Hz Lamp Flux:14.6589x1 lm		
NAME: SKOI-DW-9W-920	TYPE:Downlight	WEIGHT:
SPEC.:2000K	DIM.:	SERIAL No.:
MFR.: NEKO LIGHTING AG	SUR.:L100*W100	Shielding Angle:

pcc	80%			70%			50%			30%			10%			0
pw	50%	30%	10%	50%	30%	10%	50%	30%	10%	50%	30%	10%	50%	30%	10%	0
pfc	20%			20%			20%			20%			20%			0
RCR	RCR:Room Cavity Ratio						Coefficients of Utilization(CU)									
0.0	1.07	1.07	1.07	.99	.99	.99	.83	.83	.83	.69	.69	.69	.56	.56	.56	.50
1.0	.94	.91	.87	.87	.84	.81	.74	.72	.70	.62	.60	.59	.51	.49	.49	.43
2.0	.83	.78	.73	.77	.72	.68	.66	.62	.59	.55	.53	.51	.46	.44	.42	.38
3.0	.74	.68	.62	.69	.63	.58	.59	.55	.51	.50	.47	.44	.42	.39	.37	.33
4.0	.67	.59	.54	.62	.56	.51	.54	.49	.45	.46	.42	.39	.38	.36	.33	.30
5.0	.60	.53	.47	.56	.50	.45	.49	.44	.40	.42	.38	.35	.35	.32	.30	.27
6.0	.55	.47	.42	.51	.44	.40	.44	.39	.35	.38	.34	.31	.32	.29	.27	.24
7.0	.50	.42	.37	.47	.40	.35	.41	.36	.32	.35	.31	.28	.30	.27	.25	.22
8.0	.46	.38	.33	.43	.36	.32	.38	.32	.29	.33	.29	.26	.28	.25	.23	.20
9.0	.42	.35	.30	.40	.33	.29	.35	.30	.26	.30	.26	.24	.26	.23	.21	.19
10.0	.39	.32	.27	.37	.30	.26	.32	.27	.24	.28	.24	.22	.24	.21	.19	.17



C Range: 0 - 360DEG
C Interval: 5.0DEG
Test Speed: MEDIUM
Temperature:25.3DEG
Operators:Jason
Test Date:2022-03-17

γ Range: 0 - 180DEG
γ Interval: 0.5DEG
Test System:EVERFINE GO-2000_V1 SYSTEM V2.0.362
Humidity:65.0%
Test Distance:8.967m [K=1.1152]
Remarks:

WEC AND CCEC

Test:U:221.0V I:0.0148A P:1.156W PF:0.3543 Freq:49.99Hz Lamp Flux:14.6589x1 lm		
NAME: SKOI-DW-9W-920	TYPE:Downlight	WEIGHT:
SPEC.:2000K	DIM.:	SERIAL No.:
MFR.: NEKO LIGHTING AG	SUR.:L100*W100	Shielding Angle:

pcc	80%			70%			50%			30%			10%			0	
pw	50%	30%	10%	50%	30%	10%	50%	30%	10%	50%	30%	10%	50%	30%	10%	0	
pfc	20%			20%			20%			20%			20%			0	
RCR	RCR:Room Cavity Ratio						Wall Exitance Coefficients(WEC)										
0.0																	
1.0	.264	.150	.048	.242	.138	.044	.200	.115	.037	.162	.094	.030	.127	.074	.024		
2.0	.243	.133	.041	.223	.123	.038	.185	.103	.032	.150	.084	.026	.118	.067	.021		
3.0	.224	.119	.036	.206	.110	.033	.171	.093	.028	.140	.077	.023	.110	.061	.019		
4.0	.207	.108	.032	.191	.100	.029	.159	.084	.025	.130	.070	.021	.103	.056	.017		
5.0	.193	.098	.028	.177	.091	.027	.148	.077	.023	.122	.064	.019	.096	.052	.015		
6.0	.180	.090	.026	.166	.084	.024	.139	.071	.021	.114	.059	.017	.091	.048	.014		
7.0	.168	.083	.024	.155	.077	.022	.131	.066	.019	.107	.055	.016	.086	.045	.013		
8.0	.158	.077	.022	.146	.072	.020	.123	.062	.018	.102	.051	.015	.081	.042	.012		
9.0	.149	.072	.020	.138	.067	.019	.116	.058	.016	.096	.048	.014	.077	.039	.011		
10.0	.141	.068	.019	.130	.063	.018	.110	.054	.015	.091	.045	.013	.073	.037	.011		

pcc	80%			70%			50%			30%			10%			0
pw	50%	30%	10%	50%	30%	10%	50%	30%	10%	50%	30%	10%	50%	30%	10%	0
pfc	20%			20%			20%			20%			20%			0
RCR	RCR:Room Cavity Ratio						Ceiling Cavity Exitance Coefficients(CCEC)									
0.0	.571	.571	.571	.488	.488	.488	.333	.333	.333	.191	.191	.191	.061	.061	.061	
1.0	.561	.541	.522	.480	.464	.449	.328	.319	.311	.189	.185	.181	.061	.059	.058	
2.0	.552	.519	.491	.473	.447	.424	.324	.309	.296	.187	.180	.173	.060	.058	.057	
3.0	.544	.503	.470	.467	.434	.407	.320	.301	.286	.185	.176	.168	.059	.057	.055	
4.0	.537	.491	.455	.461	.424	.395	.317	.295	.278	.183	.173	.165	.059	.056	.054	
5.0	.530	.481	.445	.455	.416	.387	.314	.291	.273	.182	.171	.162	.059	.056	.053	
6.0	.524	.473	.437	.450	.410	.381	.311	.287	.269	.180	.169	.160	.058	.055	.053	
7.0	.518	.467	.431	.446	.405	.376	.308	.284	.266	.179	.167	.159	.058	.055	.052	
8.0	.512	.462	.427	.441	.401	.372	.305	.281	.264	.178	.166	.157	.057	.054	.052	
9.0	.507	.457	.424	.437	.397	.369	.303	.279	.262	.176	.165	.156	.057	.054	.052	
10.0	.502	.453	.421	.433	.394	.367	.301	.277	.261	.175	.164	.156	.057	.054	.052	

C Range: 0 - 360DEG
C Interval: 5.0DEG
Test Speed: MEDIUM
Temperature:25.3DEG
Operators:Jason
Test Date:2022-03-17

γ Range: 0 - 180DEG
γ Interval: 0.5DEG
Test System:EVERFINE GO-2000_V1 SYSTEM V2.0.362
Humidity:65.0%
Test Distance:8.967m [K=1.1152]
Remarks:

UGR(Unified Glare Rating) Table

Test:U:221.0V I:0.0148A P:1.156W PF:0.3543 Freq:49.99Hz Lamp Flux:14.6589x1 lm											
NAME: SKOI-DW-9W-920						TYPE:Downlight			WEIGHT:		
SPEC.:2000K						DIM.:			SERIAL No.:		
MFR.: NEKO LIGHTING AG						SUR.:L100*W100			Shielding Angle:		
ceiling/cavity	0.7	0.7	0.5	0.5	0.3	0.7	0.7	0.5	0.5	0.3	
walls	0.5	0.3	0.5	0.3	0.3	0.5	0.3	0.5	0.3	0.3	
working plane	0.2	0.2	0.2	0.2	0.2	0.2	0.2	0.2	0.2	0.2	
Room dimensions		Viewed crosswise					Viewed endwise				
x = 2H y = 2H	17.9	18.8	18.8	19.6	20.7	17.1	18.0	18.0	18.8	19.9	
	3H	21.4	22.2	22.3	23.0	24.1	18.1	18.9	19.0	19.8	20.9
	4H	22.8	23.5	23.7	24.4	25.5	18.6	19.3	19.5	20.2	21.3
	6H	23.6	24.2	24.5	25.1	26.3	19.0	19.7	19.9	20.6	21.7
	8H	23.8	24.4	24.7	25.4	26.5	19.1	19.8	20.0	20.7	21.8
	12H	24.0	24.6	24.9	25.5	26.7	19.2	19.8	20.1	20.7	21.9
4H	2H	18.5	19.3	19.4	20.1	21.3	17.9	18.6	18.8	19.5	20.7
	3H	22.2	22.8	23.1	23.7	24.9	19.4	20.0	20.4	21.0	22.1
	4H	23.8	24.3	24.7	25.2	26.5	20.1	20.7	21.1	21.6	22.8
	6H	24.6	25.1	25.6	26.1	27.3	20.7	21.2	21.7	22.1	23.4
	8H	24.9	25.3	25.9	26.3	27.6	20.9	21.4	21.9	22.3	23.6
	12H	25.1	25.5	26.1	26.5	27.8	21.1	21.5	22.0	22.4	23.7
8H	4H	24.0	24.4	25.0	25.4	26.7	21.1	21.6	22.1	22.5	23.8
	6H	25.0	25.4	26.0	26.4	27.7	22.0	22.4	23.0	23.4	24.7
	8H	25.4	25.7	26.4	26.7	28.1	22.4	22.7	23.4	23.7	25.1
	12H	25.8	26.0	26.8	27.0	28.4	22.8	23.0	23.8	24.1	25.4
12H	4H	24.0	24.4	25.0	25.3	26.6	21.3	21.7	22.3	22.6	23.9
	6H	25.1	25.4	26.1	26.4	27.7	22.2	22.6	23.3	23.6	24.9
	8H	25.5	25.8	26.5	26.8	28.1	22.8	23.1	23.8	24.1	25.4
Variations with the observer position at spacings:											
S = 1.0H	+ 0.1 / - 0.1					+ 0.3 / - 0.2					
1.5H	+ 0.1 / - 0.2					+ 0.5 / - 0.4					
2.0H	+ 0.1 / - 0.2					+ 0.8 / - 0.5					

CIE Pub.117, 14.66 lm Total Lamp Luminous Flux Correct ($8\log(F/F_0) = -14.7$)

C Range: 0 - 360DEG
C Interval: 5.0DEG
Test Speed: MEDIUM
Temperature:25.3DEG
Operators:Jason
Test Date:2022-03-17

γ Range: 0 - 180DEG
 γ Interval: 0.5DEG
Test System:EVERFINE GO-2000_V1 SYSTEM V2.0.362
Humidity:65.0%
Test Distance:8.967m [K=1.1152]
Remarks:

UTILIZATION FACTORS TABLE

Test:U:221.0V I:0.0148A P:1.156W PF:0.3543 Freq:49.99Hz Lamp Flux:14.6589x1 lm		
NAME: SKOI-DW-9W-920	TYPE:Downlight	WEIGHT:
SPEC.:2000K	DIM.:	SERIAL No.:
MFR.: NEKO LIGHTING AG	SUR.:L100*W100	Shielding Angle:

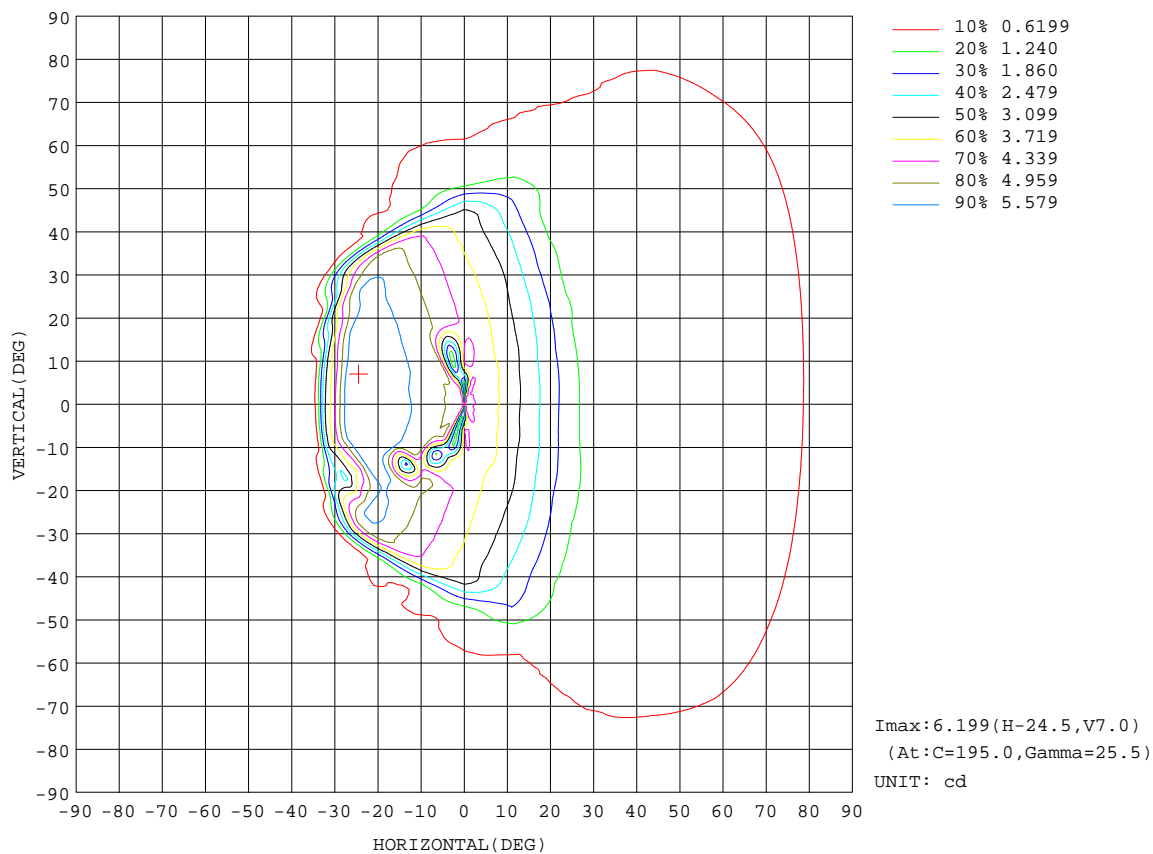
REFLECTANCE										
Ceiling	0.8	0.8	0.8	0.7	0.7	0.7	0.5	0.5	0.5	0
Walls	0.7	0.5	0.3	0.7	0.5	0.3	0.7	0.5	0.3	0
Working plane	0.2	0.2	0.2	0.2	0.2	0.2	0.2	0.2	0.2	0
ROOM INDEX	UTILIZATION FACTORS(PERCENT) k(RI) x RCR = 5									
k = 0.60	51	42	36	49	40	35	44	37	33	26
0.80	60	50	44	57	48	42	51	44	39	30
1.00	67	56	50	63	54	48	55	50	44	33
1.25	73	63	56	68	60	54	60	54	49	36
1.50	77	68	61	72	64	58	63	57	53	37
2.00	83	75	69	78	70	65	67	62	58	40
2.50	87	80	74	81	75	70	70	65	61	41
3.00	90	83	78	84	78	73	72	68	64	43
4.00	94	88	84	87	82	78	74	71	68	44
5.00	97	92	88	89	85	82	76	73	71	45
ROOM INDEX	UF(total)									Direct
According to DIN EN 13032-2 2004										
Suspended										
SHRNM = 1.25										

C Range: 0 - 360DEG
C Interval: 5.0DEG
Test Speed: MEDIUM
Temperature:25.3DEG
Operators:Jason
Test Date:2022-03-17

γ Range: 0 - 180DEG
 γ Interval: 0.5DEG
Test System:EVERFINE GO-2000_V1 SYSTEM V2.0.362
Humidity:65.0%
Test Distance:8.967m [K=1.1152]
Remarks:

ISOCANDELA DIAGRAM

Test:U:221.0V I:0.0148A P:1.156W PF:0.3543 Freq:49.99Hz Lamp Flux:14.6589x1 lm		
NAME: SKOI-DW-9W-920	TYPE:Downlight	WEIGHT:
SPEC.:2000K	DIM.:	SERIAL No.:
MFR.: NEKO LIGHTING AG	SUR.:L100*W100	Shielding Angle:

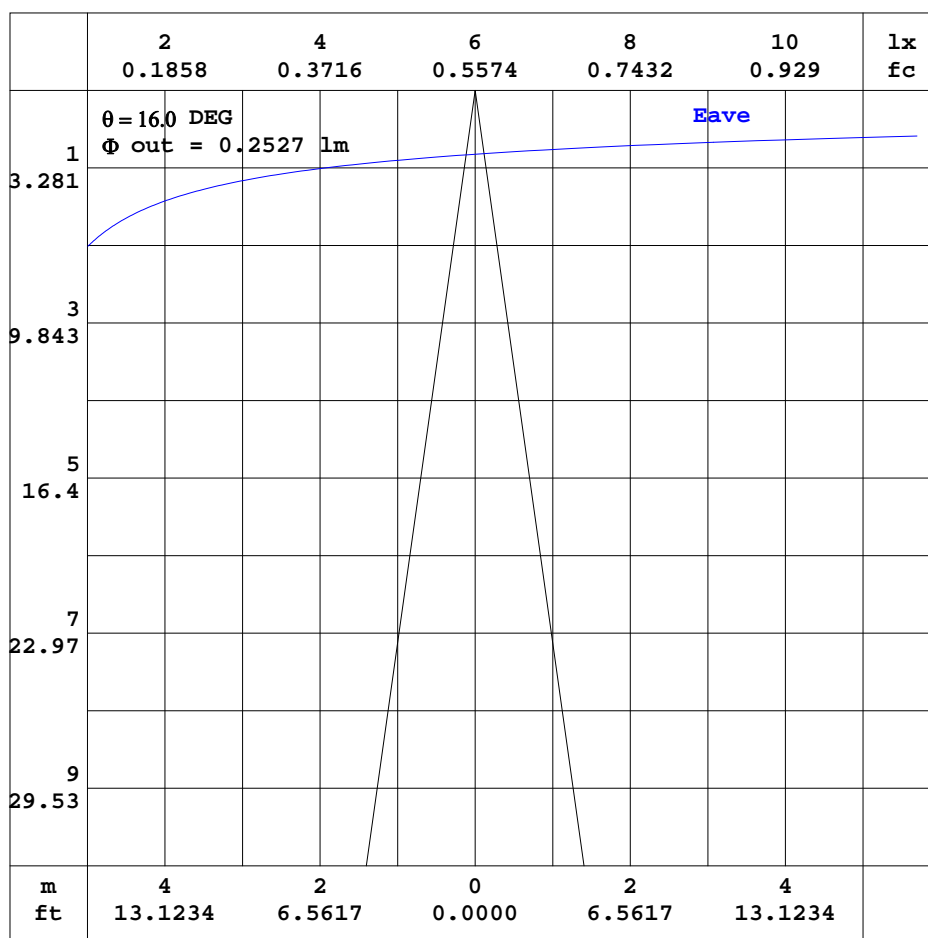


C Range: 0 - 360DEG
C Interval: 5.0DEG
Test Speed: MEDIUM
Temperature:25.3DEG
Operators:Jason
Test Date:2022-03-17

γ Range: 0 - 180DEG
γ Interval: 0.5DEG
Test System:EVERFINE GO-2000_V1 SYSTEM V2.0.362
Humidity:65.0%
Test Distance:8.967m [K=1.1152]
Remarks:

AAI CURVES

Test:U:221.0V I:0.0148A P:1.156W PF:0.3543 Freq:49.99Hz Lamp Flux:14.6589x1 lm		
NAME: SKOI-DW-9W-920	TYPE:Downlight	WEIGHT:
SPEC.:2000K	DIM.:	SERIAL No.:
MFR.: NEKO LIGHTING AG	SUR.:L100*W100	Shielding Angle:



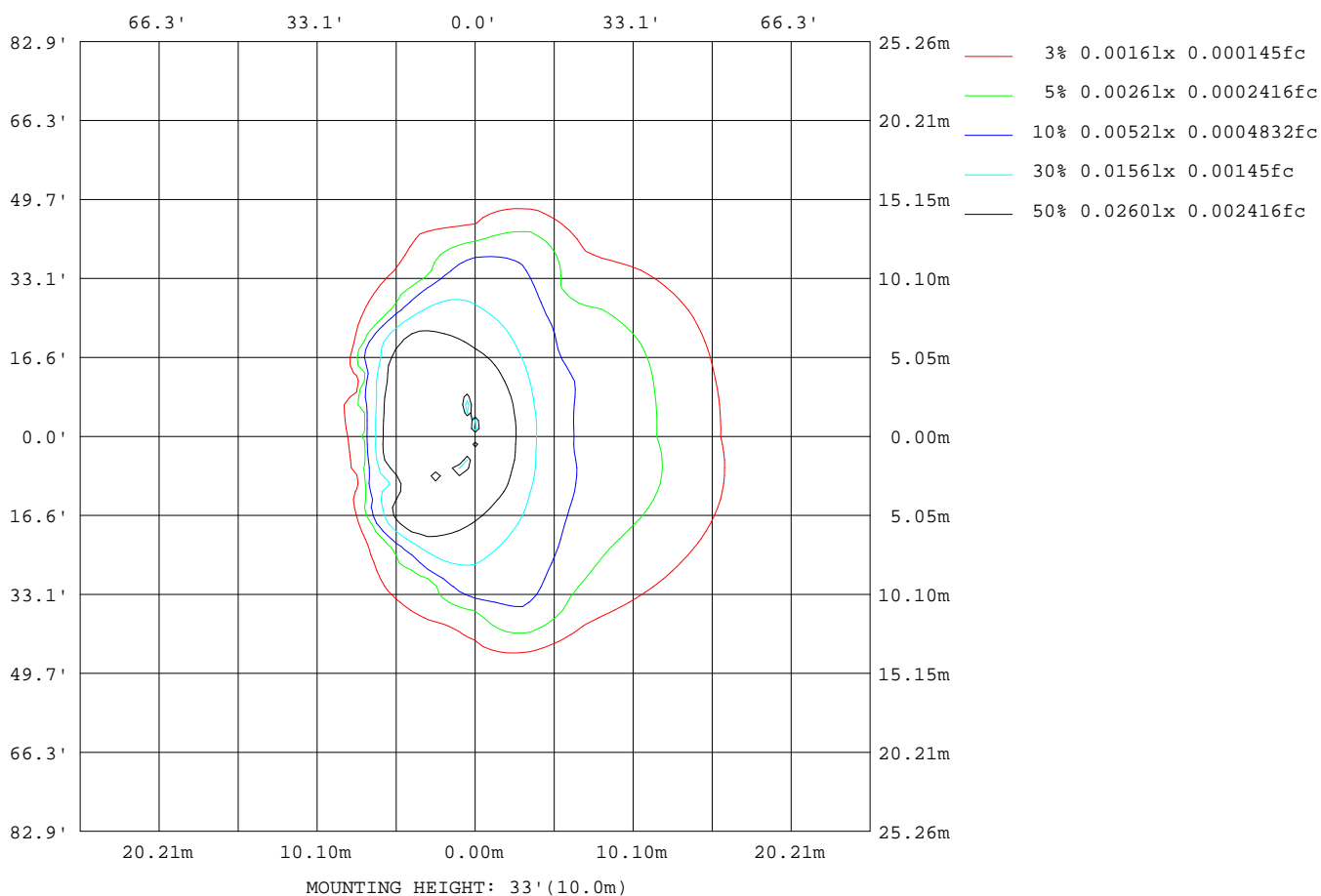
Note:The Curves indicate the illuminated area and the average illumination when the luminaire is at different distance.

C Range: 0 - 360DEG
C Interval: 5.0DEG
Test Speed: MEDIUM
Temperature:25.3DEG
Operators:Jason
Test Date:2022-03-17

γ Range: 0 - 180DEG
 γ Interval: 0.5DEG
Test System:EVERFINE GO-2000_V1 SYSTEM V2.0.362
Humidity:65.0%
Test Distance:8.967m [K=1.1152]
Remarks:

ISOLUX DIAGRAM

Test:U:221.0V I:0.0148A P:1.156W PF:0.3543 Freq:49.99Hz Lamp Flux:14.6589x1 lm		
NAME: SKOI-DW-9W-920	TYPE:Downlight	WEIGHT:
SPEC.:2000K	DIM.:	SERIAL No.:
MFR.: NEKO LIGHTING AG	SUR.:L100*W100	Shielding Angle:



C Range: 0 - 360DEG
C Interval: 5.0DEG
Test Speed: MEDIUM
Temperature:25.3DEG
Operators:Jason
Test Date:2022-03-17

γ Range: 0 - 180DEG
γ Interval: 0.5DEG
Test System:EVERFINE GO-2000_V1 SYSTEM V2.0.362
Humidity:65.0%
Test Distance:8.967m [K=1.1152]
Remarks:

LED Avg.L Report

Test:U:221.0V I:0.0148A P:1.156W PF:0.3543 Freq:49.99Hz Lamp Flux:14.6589x1 lm		
NAME: SKOI-DW-9W-920	TYPE:Downlight	WEIGHT:
SPEC.:2000K	DIM.:	SERIAL No.:
MFR.: NEKO LIGHTING AG	SUR.:L100*W100	Shielding Angle:

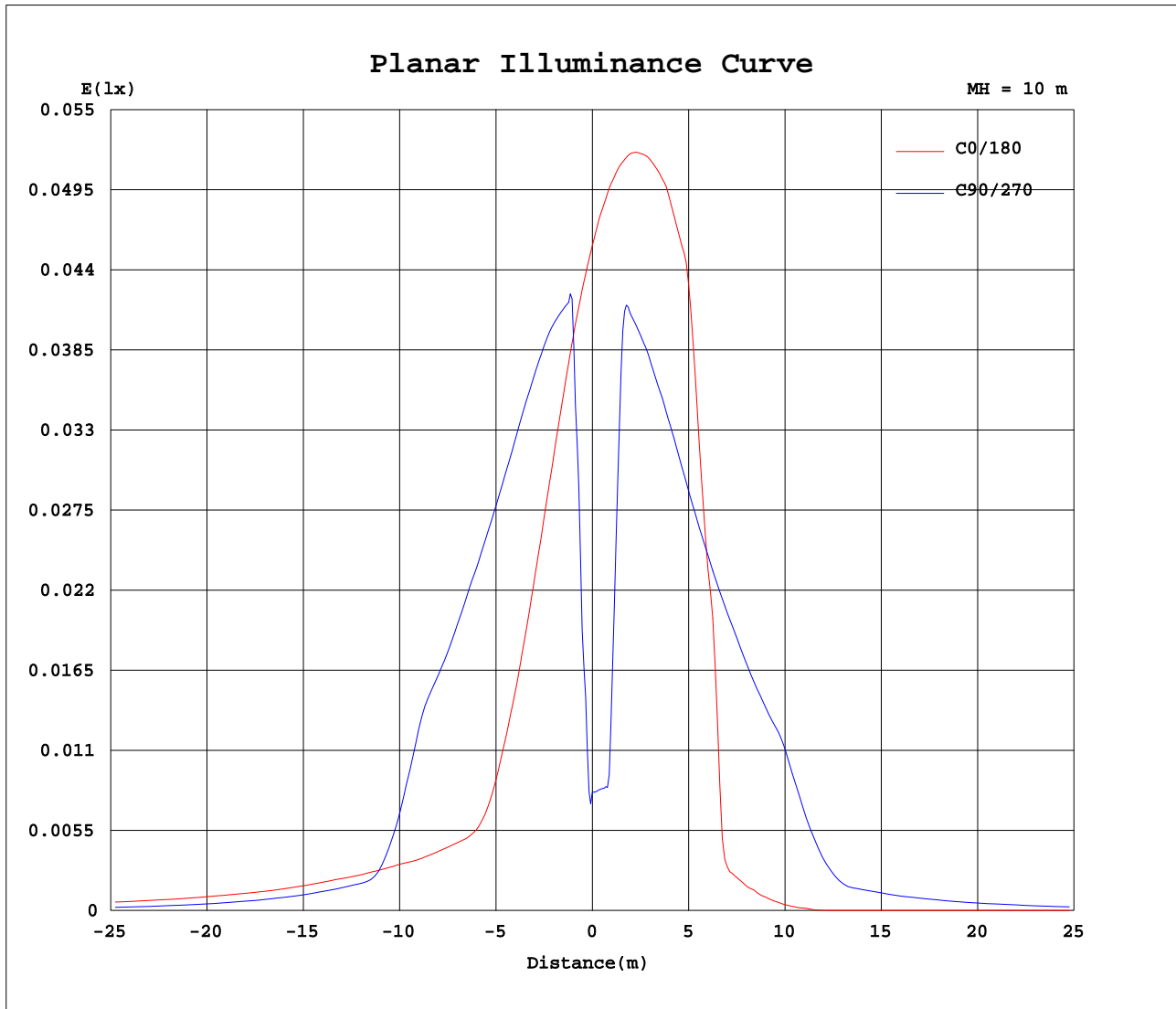
AvgL	cd/m2
L_0~180(65)av	128
L_0~180(75)av	174
L_0~180(85)av	171
L_90~270(65)av	125
L_90~270(75)av	115
L_90~270(85)av	108
L_45(65)av	104
L_45(75)av	153
L_45(85)av	195

Standard: GB/T 29293-2012

C Range: 0 - 360DEG
C Interval: 5.0DEG
Test Speed: MEDIUM
Temperature:25.3DEG
Operators:Jason
Test Date:2022-03-17

γ Range: 0 - 180DEG
γ Interval: 0.5DEG
Test System:EVERFINE GO-2000_V1 SYSTEM V2.0.362
Humidity:65.0%
Test Distance:8.967m [K=1.1152]
Remarks:

Planar Illuminance Curve



C Range: 0 - 360DEG
C Interval: 5.0DEG
Test Speed: MEDIUM
Temperature: 25.3DEG
Operators: Jason
Test Date: 2022-03-17

γ Range: 0 - 180DEG
 γ Interval: 0.5DEG
Test System: EVERFINE GO-2000_V1 SYSTEM V2.0.362
Humidity: 65.0%
Test Distance: 8.967m [K=1.1152]
Remarks:

LUMINOUS DISTRIBUTION INTENSITY DATA

Test:U:221.0V I:0.0148A P:1.156W PF:0.3543 Freq:49.99Hz Lamp Flux:14.6589x1 lm		
NAME: SKOI-DW-9W-920	TYPE:Downlight	WEIGHT:
SPEC.:2000K	DIM.:	SERIAL No.:
MFR.: NEKO LIGHTING AG	SUR.:L100*W100	Shielding Angle:

Table--1

UNIT: cd

C(DEG) γ (DEG)	0	5	10	15	20	25	30	35	40	45	50	55	60	65	70	75	80	85	90
0	4.57	4.55	4.54	4.54	4.55	4.56	4.57	4.55	4.54	4.53	4.56	4.58	4.58	4.67	4.61	4.30	3.01	1.73	0.82
5	4.08	4.06	4.05	4.05	4.08	4.11	4.14	4.15	4.16	4.18	4.23	4.29	4.32	4.31	4.26	4.17	4.08	3.88	3.51
10	3.48	3.47	3.47	3.49	3.53	3.58	3.64	3.68	3.72	3.77	3.86	3.96	4.04	4.03	4.02	4.01	4.26	4.39	4.27
15	2.82	2.82	2.83	2.87	2.93	3.01	3.09	3.16	3.23	3.32	3.45	3.58	3.70	3.74	3.79	3.84	3.99	4.14	4.23
20	2.13	2.13	2.16	2.20	2.29	2.39	2.50	2.61	2.72	2.84	3.00	3.16	3.32	3.42	3.51	3.62	3.77	3.93	4.10
25	1.46	1.47	1.50	1.56	1.65	1.76	1.89	2.03	2.18	2.35	2.54	2.74	2.94	3.10	3.25	3.40	3.57	3.75	3.94
30	0.94	0.93	0.96	1.02	1.12	1.25	1.39	1.51	1.66	1.82	2.05	2.29	2.53	2.74	2.94	3.14	3.35	3.56	3.78
35	0.85	0.86	0.87	0.90	0.93	0.97	1.03	1.11	1.23	1.37	1.59	1.84	2.10	2.34	2.59	2.84	3.09	3.33	3.58
40	0.85	0.87	0.89	0.90	0.90	0.90	0.91	0.92	0.95	1.03	1.20	1.42	1.67	1.93	2.19	2.47	2.82	3.12	3.34
45	0.90	0.94	0.96	0.97	0.95	0.93	0.90	0.87	0.87	0.89	0.98	1.11	1.29	1.58	1.88	2.11	2.15	2.07	1.89
50	0.94	0.98	1.01	1.02	1.00	0.97	0.94	0.91	0.89	0.88	0.88	0.91	0.99	1.22	1.44	1.57	1.34	1.03	0.72
55	0.99	1.03	1.05	1.05	1.03	1.01	0.97	0.94	0.90	0.87	0.83	0.80	0.78	0.79	0.80	0.81	0.77	0.72	0.66
60	1.02	1.06	1.08	1.08	1.06	1.03	0.99	0.94	0.90	0.85	0.83	0.80	0.77	0.71	0.66	0.61	0.60	0.59	0.58
65	1.08	1.11	1.12	1.11	1.09	1.05	1.00	0.94	0.89	0.84	0.81	0.78	0.75	0.68	0.61	0.54	0.52	0.51	0.49
70	1.15	1.13	1.11	1.08	1.06	1.04	1.00	0.94	0.88	0.81	0.77	0.73	0.68	0.60	0.52	0.45	0.43	0.41	0.38
75	0.90	0.87	0.85	0.85	0.87	0.89	0.90	0.85	0.79	0.73	0.68	0.63	0.58	0.51	0.44	0.38	0.35	0.31	0.27
80	0.53	0.50	0.48	0.48	0.49	0.52	0.53	0.52	0.50	0.47	0.46	0.46	0.44	0.40	0.35	0.29	0.25	0.21	0.17
85	0.30	0.27	0.25	0.25	0.27	0.29	0.31	0.29	0.27	0.25	0.28	0.31	0.33	0.31	0.27	0.22	0.17	0.12	0.08
90	0.16	0.17	0.19	0.20	0.21	0.22	0.23	0.24	0.25	0.25	0.25	0.25	0.24	0.24	0.00	0.23	0.16	0.09	0.03
95	0.30	0.32	0.34	0.36	0.36	0.35	0.36	0.38	0.41	0.43	0.40	0.37	0.33	0.33	0.33	0.32	0.26	0.18	0.11
100	0.53	0.56	0.58	0.60	0.62	0.63	0.64	0.67	0.69	0.69	0.63	0.55	0.48	0.46	0.44	0.41	0.35	0.29	0.22
105	0.90	0.94	0.96	0.98	1.00	1.01	1.00	0.97	0.92	0.86	0.77	0.68	0.60	0.56	0.54	0.51	0.45	0.39	0.32
110	1.15	1.15	1.13	1.12	1.10	1.07	1.03	1.00	0.96	0.91	0.84	0.76	0.69	0.66	0.63	0.60	0.55	0.50	0.44
115	1.08	1.08	1.08	1.08	1.07	1.05	1.03	1.00	0.96	0.91	0.85	0.79	0.74	0.72	0.70	0.68	0.65	0.61	0.56
120	1.02	1.03	1.04	1.04	1.04	1.04	1.03	1.00	0.96	0.92	0.85	0.79	0.75	0.74	0.74	0.74	0.71	0.68	0.65
125	0.99	0.99	0.99	1.00	1.01	1.03	1.03	1.00	0.96	0.92	0.85	0.79	0.76	0.86	0.97	1.05	0.97	0.85	0.73
130	0.94	0.95	0.96	0.97	0.99	1.00	1.01	0.99	0.96	0.92	0.84	0.79	0.82	1.12	1.45	1.72	1.71	1.59	1.41
135	0.90	0.90	0.91	0.91	0.93	0.95	0.96	0.95	0.93	0.92	0.89	0.91	1.01	1.34	1.73	2.15	2.62	2.97	3.14
140	0.85	0.87	0.88	0.89	0.90	0.91	0.91	0.89	0.89	0.93	1.05	1.23	1.47	1.83	2.23	2.63	2.94	3.22	3.49
145	0.85	0.84	0.85	0.87	0.91	0.95	1.01	1.03	1.08	1.18	1.39	1.65	1.96	2.30	2.66	3.00	3.25	3.49	3.72
150	0.94	0.94	0.96	0.99	1.03	1.10	1.20	1.35	1.54	1.76	1.99	2.23	2.50	2.79	3.08	3.35	3.54	3.72	3.90
155	1.46	1.48	1.52	1.57	1.63	1.71	1.81	1.96	2.14	2.33	2.52	2.72	2.93	3.14	3.36	3.56	3.74	3.91	4.08
160	2.13	2.15	2.19	2.23	2.29	2.35	2.44	2.58	2.72	2.88	3.02	3.17	3.32	3.48	3.64	3.79	3.95	4.09	4.24
165	2.82	2.84	2.87	2.91	2.95	3.00	3.07	3.17	3.28	3.39	3.48	3.56	3.65	3.77	3.89	4.01	4.23	4.36	4.32
170	3.48	3.49	3.51	3.53	3.56	3.59	3.63	3.70	3.77	3.83	3.87	3.90	3.95	4.03	4.12	4.21	4.45	4.54	4.35
175	4.08	4.09	4.10	4.10	4.11	4.11	4.12	4.15	4.18	4.21	4.21	4.21	4.21	4.42	4.50	4.33	3.12	1.87	0.94
180	4.57	4.57	4.57	4.57	4.57	4.57	4.57	4.57	4.57	4.57	4.57	4.57	4.57	4.57	4.57	4.57	4.57	4.57	4.57

C Range: 0 - 360DEG
C Interval: 5.0DEG
Test Speed: MEDIUM
Temperature:25.3DEG
Operators:Jason
Test Date:2022-03-17

γ Range: 0 - 180DEG
γ Interval: 0.5DEG
Test System:EVERFINE GO-2000_V1 SYSTEM V2.0.362
Humidity:65.0%
Test Distance:8.967m [K=1.1152]
Remarks:

LUMINOUS DISTRIBUTION INTENSITY DATA

Test:U:221.0V I:0.0148A P:1.156W PF:0.3543 Freq:49.99Hz Lamp Flux:14.6589x1 lm		
NAME: SKOI-DW-9W-920	TYPE:Downlight	WEIGHT:
SPEC.:2000K	DIM.:	SERIAL No.:
MFR.: NEKO LIGHTING AG	SUR.:L100*W100	Shielding Angle:

Table--2

UNIT: cd

C(DEG) γ (DEG)	95	100	105	110	115	120	125	130	135	140	145	150	155	160	165	170	175	180	185
0	1.56	2.71	3.90	4.26	4.41	4.44	4.50	4.53	4.54	4.54	4.54	4.54	4.55	4.56	4.57	4.58	4.57	4.57	4.56
5	2.44	1.46	0.88	1.90	3.27	4.61	4.91	4.94	4.82	4.86	4.89	4.91	4.94	4.97	4.99	5.01	5.02	5.02	5.00
10	3.10	1.91	1.05	1.77	2.88	4.07	4.56	4.88	5.05	5.16	5.21	5.23	5.28	5.33	5.37	5.40	5.41	5.42	5.40
15	4.20	4.06	3.80	3.05	2.39	2.05	2.95	4.11	5.23	5.50	5.55	5.49	5.57	5.64	5.70	5.74	5.76	5.76	5.74
20	4.26	4.42	4.58	4.90	5.09	5.03	3.92	2.80	2.04	3.01	4.35	5.69	6.00	6.06	5.97	6.02	6.05	6.05	6.03
25	4.13	4.32	4.52	4.71	4.90	5.09	5.26	5.43	5.58	5.69	5.78	5.87	5.98	6.08	6.15	6.16	6.14	6.12	6.15
30	4.00	4.22	4.45	4.68	4.91	5.12	5.44	5.65	5.65	4.92	4.10	3.43	3.67	4.11	4.56	4.51	4.37	4.24	4.30
35	3.82	4.06	4.30	4.55	4.78	5.00	5.31	5.48	5.41	4.65	3.69	2.66	1.83	1.13	0.60	0.44	0.45	0.55	0.49
40	3.34	3.21	2.95	2.46	1.93	1.45	1.31	1.25	1.20	0.95	0.69	0.45	0.36	0.32	0.31	0.30	0.30	0.31	0.34
45	1.48	1.05	0.66	0.60	0.61	0.65	0.58	0.48	0.39	0.34	0.29	0.25	0.21	0.17	0.14	0.12	0.11	0.11	0.14
50	0.64	0.61	0.61	0.58	0.54	0.49	0.39	0.29	0.20	0.16	0.14	0.13	0.09	0.05	0.02	0.00	0.00	0.01	0.03
55	0.62	0.57	0.52	0.45	0.38	0.31	0.22	0.13	0.06	0.04	0.03	0.03	0.02	0.01	0.00	0.00	0.00	0.00	0.00
60	0.53	0.47	0.40	0.32	0.24	0.17	0.10	0.04	0.00	0.00	0.00	0.01	0.00	0.00	0.00	0.00	0.00	0.01	0.01
65	0.41	0.33	0.23	0.17	0.11	0.07	0.04	0.01	0.00	0.00	0.00	0.01	0.00	0.00	0.00	0.00	0.00	0.01	0.01
70	0.30	0.20	0.11	0.07	0.04	0.02	0.00	0.00	0.00	0.00	0.00	0.01	0.00	0.00	0.00	0.00	0.00	0.01	0.01
75	0.18	0.09	0.02	0.00	0.00	0.01	0.01	0.00	0.00	0.00	0.00	0.01	0.00	0.00	0.00	0.00	0.00	0.00	0.00
80	0.11	0.06	0.02	0.01	0.01	0.01	0.01	0.00	0.00	0.00	0.00	0.01	0.00	0.00	0.00	0.00	0.00	0.00	0.00
85	0.05	0.03	0.02	0.01	0.01	0.01	0.00	0.00	0.00	0.00	0.00	0.01	0.00	0.00	0.00	0.00	0.00	0.00	0.00
90	0.02	0.02	0.00	0.00	0.01	0.00	0.00	0.00	0.00	0.00	0.00	0.00	0.00	0.00	0.00	0.00	0.00	0.00	0.00
95	0.07	0.05	0.04	0.02	0.01	0.00	0.00	0.00	0.00	0.00	0.00	0.00	0.00	0.00	0.01	0.00	0.00	0.00	0.00
100	0.16	0.10	0.06	0.03	0.01	0.00	0.00	0.00	0.00	0.00	0.00	0.00	0.00	0.00	0.01	0.00	0.00	0.00	0.00
105	0.26	0.21	0.15	0.09	0.04	0.00	0.00	0.00	0.00	0.00	0.00	0.00	0.00	0.00	0.01	0.00	0.00	0.00	0.00
110	0.39	0.34	0.28	0.18	0.08	0.00	0.00	0.00	0.01	0.00	0.00	0.00	0.00	0.00	0.01	0.01	0.01	0.01	0.00
115	0.54	0.50	0.43	0.30	0.16	0.03	0.00	0.00	0.01	0.00	0.00	0.00	0.00	0.00	0.01	0.01	0.01	0.01	0.00
120	0.65	0.64	0.61	0.46	0.30	0.15	0.09	0.06	0.05	0.03	0.01	0.00	0.00	0.00	0.01	0.01	0.01	0.01	0.00
125	0.73	0.73	0.72	0.60	0.45	0.31	0.24	0.19	0.15	0.09	0.04	0.01	0.00	0.00	0.01	0.01	0.00	0.00	0.00
130	1.20	0.98	0.77	0.67	0.59	0.53	0.46	0.39	0.32	0.24	0.17	0.11	0.09	0.08	0.08	0.05	0.03	0.01	0.00
135	2.75	2.20	1.60	1.24	0.94	0.73	0.62	0.57	0.53	0.44	0.35	0.27	0.24	0.23	0.21	0.18	0.14	0.11	0.11
140	3.82	4.11	4.34	4.44	4.45	4.36	4.22	3.94	3.47	2.46	1.41	0.49	0.28	0.28	0.40	0.37	0.34	0.31	0.30
145	3.99	4.27	4.54	4.81	5.05	5.27	5.54	5.69	5.65	5.14	4.43	3.57	2.56	1.60	0.79	0.54	0.49	0.55	0.45
150	4.14	4.39	4.64	4.87	5.08	5.28	5.47	5.63	5.76	5.88	5.93	5.86	5.51	5.09	4.67	4.45	4.30	4.24	4.37
155	4.27	4.46	4.66	4.87	5.08	5.27	5.42	5.56	5.69	5.83	5.95	6.06	6.13	6.17	6.19	6.17	6.15	6.12	6.14
160	4.37	4.50	4.65	4.85	5.06	5.25	5.36	5.46	5.54	5.65	5.75	5.84	5.90	5.93	5.96	6.00	6.03	6.05	6.05
165	3.57	2.83	2.35	3.12	4.14	5.14	5.37	5.41	5.36	5.45	5.54	5.61	5.64	5.66	5.68	5.71	5.74	5.76	5.76
170	3.01	1.69	0.80	1.92	3.47	5.00	5.29	5.28	5.13	5.19	5.26	5.31	5.33	5.34	5.35	5.38	5.40	5.42	5.41
175	1.58	2.60	3.73	4.24	4.60	4.81	4.88	4.89	4.85	4.89	4.93	4.97	4.97	4.97	4.97	4.99	5.00	5.02	5.02
180	4.57	4.57	4.57	4.57	4.57	4.57	4.57	4.57	4.57	4.57	4.57	4.57	4.57	4.57	4.57	4.57	4.57	4.57	4.57

C Range: 0 - 360DEG
C Interval: 5.0DEG
Test Speed: MEDIUM
Temperature:25.3DEG
Operators:Jason
Test Date:2022-03-17

γ Range: 0 - 180DEG
γ Interval: 0.5DEG
Test System:EVERFINE GO-2000_V1 SYSTEM V2.0.362
Humidity:65.0%
Test Distance:8.967m [K=1.1152]
Remarks:

LUMINOUS DISTRIBUTION INTENSITY DATA

Test:U:221.0V I:0.0148A P:1.156W PF:0.3543 Freq:49.99Hz Lamp Flux:14.6589x1 lm		
NAME: SKOI-DW-9W-920	TYPE:Downlight	WEIGHT:
SPEC.:2000K	DIM.:	SERIAL No.:
MFR.: NEKO LIGHTING AG	SUR.:L100*W100	Shielding Angle:

Table--3

UNIT: cd

C(DEC) γ (DEC)	190	195	200	205	210	215	220	225	230	235	240	245	250	255	260	265	270	275	280
0	4.54	4.54	4.55	4.56	4.57	4.55	4.54	4.53	4.56	4.58	4.58	4.67	4.61	4.30	3.01	1.73	0.82	1.56	2.71
5	4.99	4.97	4.97	4.97	4.97	4.93	4.89	4.85	4.89	4.88	4.81	4.60	4.24	3.73	2.60	1.58	0.94	1.87	3.12
10	5.38	5.35	5.34	5.33	5.31	5.26	5.19	5.13	5.28	5.29	5.00	3.47	1.92	0.80	1.69	3.01	4.35	4.54	4.45
15	5.71	5.68	5.66	5.64	5.61	5.54	5.45	5.36	5.41	5.37	5.14	4.14	3.12	2.35	2.83	3.57	4.32	4.36	4.23
20	6.00	5.96	5.93	5.90	5.84	5.75	5.65	5.54	5.46	5.36	5.25	5.06	4.85	4.65	4.50	4.37	4.24	4.09	3.95
25	6.17	6.19	6.17	6.13	6.06	5.95	5.83	5.69	5.56	5.42	5.27	5.08	4.87	4.66	4.46	4.27	4.08	3.91	3.74
30	4.45	4.67	5.09	5.51	5.86	5.93	5.88	5.76	5.63	5.47	5.28	5.08	4.87	4.64	4.39	4.14	3.90	3.72	3.54
35	0.54	0.79	1.60	2.56	3.57	4.43	5.14	5.65	5.69	5.54	5.27	5.05	4.81	4.54	4.27	3.99	3.72	3.49	3.25
40	0.37	0.40	0.28	0.28	0.49	1.41	2.46	3.47	3.94	4.22	4.36	4.45	4.44	4.34	4.11	3.82	3.49	3.22	2.94
45	0.18	0.21	0.23	0.24	0.27	0.35	0.44	0.53	0.57	0.62	0.73	0.94	1.24	1.60	2.20	2.75	3.14	2.97	2.62
50	0.05	0.08	0.08	0.09	0.11	0.17	0.24	0.32	0.39	0.46	0.53	0.59	0.67	0.77	0.98	1.20	1.41	1.59	1.71
55	0.01	0.01	0.00	0.00	0.01	0.04	0.09	0.15	0.19	0.24	0.31	0.45	0.60	0.72	0.73	0.73	0.73	0.85	0.97
60	0.01	0.01	0.00	0.00	0.00	0.01	0.03	0.05	0.06	0.09	0.15	0.30	0.46	0.61	0.64	0.65	0.65	0.68	0.71
65	0.01	0.01	0.00	0.00	0.00	0.00	0.00	0.01	0.00	0.00	0.03	0.16	0.30	0.43	0.50	0.54	0.56	0.61	0.65
70	0.01	0.01	0.00	0.00	0.00	0.00	0.00	0.01	0.00	0.00	0.00	0.08	0.18	0.28	0.34	0.39	0.44	0.50	0.55
75	0.00	0.01	0.00	0.00	0.00	0.00	0.00	0.00	0.00	0.00	0.00	0.04	0.09	0.15	0.21	0.26	0.32	0.39	0.45
80	0.00	0.01	0.00	0.00	0.00	0.00	0.00	0.00	0.00	0.00	0.00	0.01	0.03	0.06	0.10	0.16	0.22	0.29	0.35
85	0.00	0.01	0.00	0.00	0.00	0.00	0.00	0.00	0.00	0.00	0.00	0.01	0.02	0.04	0.05	0.07	0.11	0.18	0.26
90	0.00	0.00	0.00	0.00	0.00	0.00	0.00	0.01	0.01	0.00	0.01	0.01	0.01	0.02	0.01	0.02	0.03	0.08	0.13
95	0.00	0.00	0.00	0.00	0.01	0.00	0.00	0.00	0.00	0.00	0.01	0.01	0.01	0.02	0.03	0.05	0.08	0.12	0.17
100	0.00	0.00	0.00	0.00	0.01	0.00	0.00	0.00	0.00	0.01	0.01	0.01	0.01	0.02	0.06	0.11	0.17	0.21	0.25
105	0.00	0.00	0.00	0.00	0.01	0.00	0.00	0.00	0.00	0.01	0.01	0.00	0.00	0.02	0.09	0.18	0.27	0.31	0.35
110	0.00	0.00	0.00	0.00	0.01	0.00	0.00	0.00	0.00	0.00	0.02	0.04	0.07	0.11	0.20	0.30	0.38	0.41	0.43
115	0.00	0.00	0.00	0.00	0.01	0.00	0.00	0.00	0.01	0.04	0.07	0.11	0.17	0.23	0.33	0.41	0.49	0.51	0.52
120	0.00	0.00	0.00	0.00	0.01	0.00	0.00	0.00	0.04	0.10	0.17	0.24	0.32	0.40	0.47	0.53	0.58	0.59	0.60
125	0.00	0.00	0.01	0.02	0.03	0.03	0.04	0.06	0.13	0.22	0.31	0.38	0.45	0.52	0.57	0.62	0.66	0.72	0.77
130	0.00	0.02	0.05	0.09	0.13	0.14	0.16	0.20	0.29	0.39	0.49	0.54	0.58	0.61	0.61	0.64	0.72	1.03	1.34
135	0.12	0.14	0.17	0.21	0.25	0.29	0.34	0.39	0.48	0.58	0.65	0.61	0.60	0.66	1.05	1.48	1.89	2.07	2.15
140	0.30	0.31	0.32	0.36	0.45	0.69	0.95	1.20	1.25	1.31	1.45	1.93	2.46	2.95	3.21	3.34	3.34	3.12	2.82
145	0.44	0.60	1.13	1.83	2.66	3.69	4.65	5.41	5.48	5.31	5.00	4.78	4.55	4.30	4.06	3.82	3.58	3.33	3.09
150	4.51	4.56	4.11	3.67	3.43	4.10	4.92	5.65	5.65	5.44	5.12	4.91	4.68	4.45	4.22	4.00	3.78	3.56	3.35
155	6.16	6.15	6.08	5.98	5.87	5.78	5.69	5.58	5.43	5.26	5.09	4.90	4.71	4.52	4.32	4.13	3.94	3.75	3.57
160	6.02	5.97	6.06	6.00	5.69	4.35	3.01	2.04	2.80	3.92	5.03	5.09	4.90	4.58	4.42	4.26	4.10	3.93	3.77
165	5.74	5.70	5.64	5.57	5.49	5.55	5.50	5.23	4.11	2.95	2.05	2.39	3.05	3.80	4.06	4.20	4.23	4.14	3.99
170	5.40	5.37	5.33	5.28	5.23	5.21	5.16	5.05	4.88	4.56	4.07	2.88	1.77	1.05	1.91	3.10	4.27	4.39	4.26
175	5.01	4.99	4.97	4.94	4.91	4.89	4.86	4.82	4.94	4.91	4.61	3.27	1.90	0.88	1.46	2.44	3.51	3.88	4.08
180	4.57	4.57	4.57	4.57	4.57	4.57	4.57	4.57	4.57	4.57	4.57	4.57	4.57	4.57	4.57	4.57	4.57	4.57	4.57

C Range: 0 - 360DEG
C Interval: 5.0DEG
Test Speed: MEDIUM
Temperature:25.3DEG
Operators:Jason
Test Date:2022-03-17

γ Range: 0 - 180DEG
γ Interval: 0.5DEG
Test System:EVERFINE GO-2000_V1 SYSTEM V2.0.362
Humidity:65.0%
Test Distance:8.967m [K=1.1152]
Remarks:

LUMINOUS DISTRIBUTION INTENSITY DATA

Test:U:221.0V I:0.0148A P:1.156W PF:0.3543 Freq:49.99Hz Lamp Flux:14.6589x1 lm																	
NAME: SKOI-DW-9W-920									TYPE:Downlight						WEIGHT:		
SPEC.:2000K									DIM.:						SERIAL No.:		
MFR.: NEKO LIGHTING AG									SUR.:L100*W100						Shielding Angle:		

Table--4

UNIT: cd

C(DEG) γ (DEG)	285	290	295	300	305	310	315	320	325	330	335	340	345	350	355				
0	3.90	4.26	4.41	4.44	4.50	4.53	4.54	4.54	4.54	4.54	4.55	4.56	4.57	4.58	4.58				
5	4.33	4.50	4.42	4.21	4.21	4.21	4.21	4.18	4.15	4.12	4.11	4.11	4.10	4.10	4.09				
10	4.21	4.12	4.03	3.95	3.90	3.87	3.83	3.77	3.70	3.63	3.59	3.56	3.53	3.51	3.49				
15	4.01	3.89	3.77	3.65	3.56	3.48	3.39	3.28	3.17	3.07	3.00	2.95	2.91	2.87	2.84				
20	3.79	3.64	3.48	3.32	3.17	3.02	2.88	2.72	2.58	2.44	2.35	2.29	2.23	2.19	2.15				
25	3.56	3.36	3.14	2.93	2.72	2.52	2.33	2.14	1.96	1.81	1.71	1.63	1.57	1.52	1.48				
30	3.35	3.08	2.79	2.50	2.23	1.99	1.76	1.54	1.35	1.20	1.10	1.03	0.99	0.96	0.94				
35	3.00	2.66	2.30	1.96	1.65	1.39	1.18	1.08	1.03	1.01	0.95	0.91	0.87	0.85	0.84				
40	2.63	2.23	1.83	1.47	1.23	1.05	0.93	0.89	0.89	0.91	0.91	0.90	0.89	0.88	0.87				
45	2.15	1.73	1.34	1.01	0.91	0.89	0.92	0.93	0.95	0.96	0.95	0.93	0.91	0.91	0.90				
50	1.72	1.45	1.12	0.82	0.79	0.84	0.92	0.96	0.99	1.01	1.00	0.99	0.97	0.96	0.95				
55	1.05	0.97	0.86	0.76	0.79	0.85	0.92	0.96	1.00	1.03	1.03	1.01	1.00	0.99	0.99				
60	0.74	0.74	0.74	0.75	0.79	0.85	0.92	0.96	1.00	1.03	1.04	1.04	1.04	1.04	1.03				
65	0.68	0.70	0.72	0.74	0.79	0.85	0.91	0.96	1.00	1.03	1.05	1.07	1.08	1.08	1.08				
70	0.60	0.63	0.66	0.69	0.76	0.84	0.91	0.96	1.00	1.03	1.07	1.10	1.12	1.13	1.15				
75	0.51	0.54	0.56	0.60	0.68	0.77	0.86	0.92	0.97	1.00	1.01	1.00	0.98	0.96	0.94				
80	0.41	0.44	0.46	0.48	0.55	0.63	0.69	0.69	0.67	0.64	0.63	0.62	0.60	0.58	0.56				
85	0.32	0.33	0.33	0.33	0.37	0.40	0.43	0.41	0.38	0.36	0.35	0.36	0.36	0.34	0.32				
90	0.22	0.22	0.25	0.27	0.24	0.21	0.18	0.18	0.18	0.19	0.18	0.17	0.16	0.15	0.15				
95	0.22	0.27	0.31	0.33	0.31	0.28	0.25	0.27	0.29	0.31	0.29	0.27	0.25	0.25	0.27				
100	0.29	0.35	0.40	0.44	0.46	0.46	0.47	0.50	0.52	0.53	0.52	0.49	0.48	0.48	0.50				
105	0.38	0.44	0.51	0.58	0.63	0.68	0.73	0.79	0.85	0.90	0.89	0.87	0.85	0.85	0.87				
110	0.45	0.52	0.60	0.68	0.73	0.77	0.81	0.88	0.94	1.00	1.04	1.06	1.08	1.11	1.13				
115	0.54	0.61	0.68	0.75	0.78	0.81	0.84	0.89	0.94	1.00	1.05	1.09	1.11	1.12	1.11				
120	0.61	0.66	0.71	0.77	0.80	0.83	0.85	0.90	0.94	0.99	1.03	1.06	1.08	1.08	1.06				
125	0.81	0.80	0.79	0.78	0.80	0.83	0.87	0.90	0.94	0.97	1.01	1.03	1.05	1.05	1.03				
130	1.57	1.44	1.22	0.99	0.91	0.88	0.88	0.89	0.91	0.94	0.97	1.00	1.02	1.01	0.98				
135	2.11	1.88	1.58	1.29	1.11	0.98	0.89	0.87	0.87	0.90	0.93	0.95	0.97	0.96	0.94				
140	2.47	2.19	1.93	1.67	1.42	1.20	1.03	0.95	0.92	0.91	0.90	0.90	0.90	0.89	0.87				
145	2.84	2.59	2.34	2.10	1.84	1.59	1.37	1.23	1.11	1.03	0.97	0.93	0.90	0.87	0.86				
150	3.14	2.94	2.74	2.53	2.29	2.05	1.82	1.66	1.51	1.39	1.25	1.12	1.02	0.96	0.93				
155	3.40	3.25	3.10	2.94	2.74	2.54	2.35	2.18	2.03	1.89	1.76	1.65	1.56	1.50	1.47				
160	3.62	3.51	3.42	3.32	3.16	3.00	2.84	2.72	2.61	2.50	2.39	2.29	2.20	2.16	2.13				
165	3.84	3.79	3.74	3.70	3.58	3.45	3.32	3.23	3.16	3.09	3.01	2.93	2.87	2.83	2.82				
170	4.01	4.02	4.03	4.04	3.96	3.86	3.77	3.72	3.68	3.64	3.58	3.53	3.49	3.47	3.47				
175	4.17	4.26	4.31	4.32	4.29	4.23	4.18	4.16	4.15	4.14	4.11	4.08	4.05	4.05	4.06				
180	4.57	4.57	4.57	4.57	4.57	4.57	4.57	4.57	4.57	4.57	4.57	4.57	4.57	4.57	4.57				

C Range: 0 - 360DEG
C Interval: 5.0DEG
Test Speed: MEDIUM
Temperature:25.3DEG
Operators:Jason
Test Date:2022-03-17

γ Range: 0 - 180DEG
γ Interval: 0.5DEG
Test System:EVERFINE GO-2000_V1 SYSTEM V2.0.362
Humidity:65.0%
Test Distance:8.967m [K=1.1152]
Remarks: